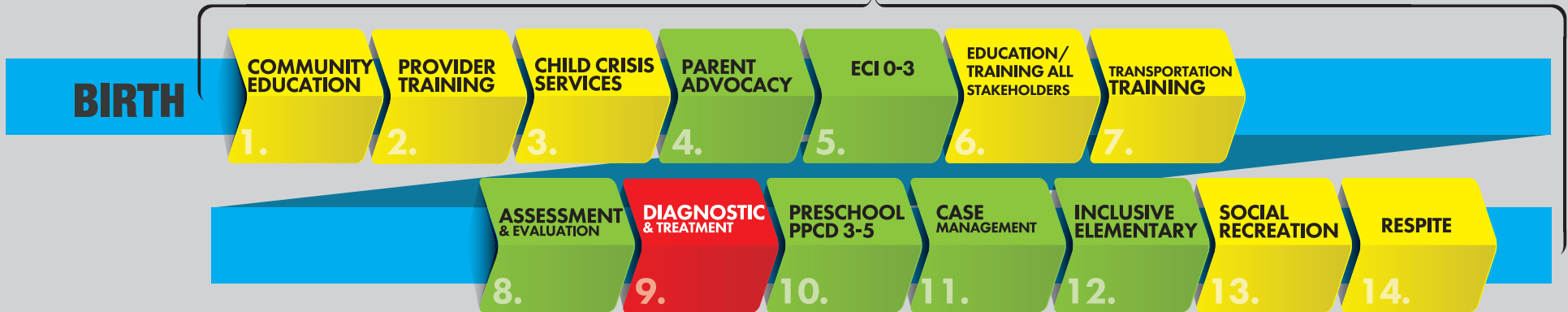


# CONTINUUM OF CARE FOR PEOPLE WITH INTELLECTUAL AND DEVELOPMENTAL DISABILITIES

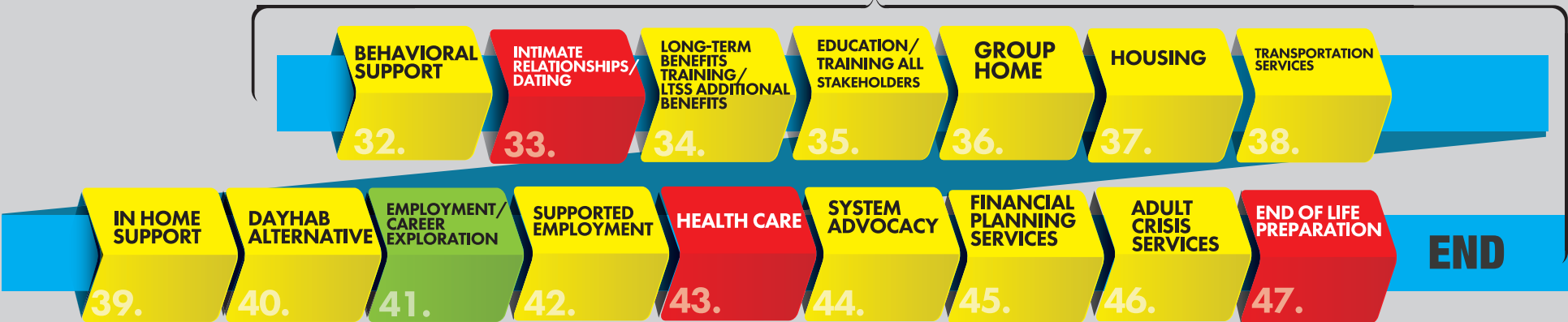
0 - 10 YEARS OLD



11 - 22 YEARS OLD



22 - AND UP



GREEN - MULTIPLE RESOURCES AVAILABLE

YELLOW - LIMITED RESOURCES AVAILABLE

RED - NOT ESTABLISHED

**END**

# CONTINUUM OF CARE FOR PEOPLE WITH INTELLECTUAL AND DEVELOPMENTAL DISABILITIES

0 - 10 YEARS OLD

1. **COMMUNITY EDUCATION**  
An opportunity for persons with IDD to be able to access learning opportunities at their level that empower them to pursue interests in minimally restrictive environments.
2. **PROVIDER TRAINING**  
The process of training direct care staff to a knowledgeable standard of proficiency that supports best practices and results oriented
3. **CHILD CRISIS SERVICES**  
Crisis assessments, screening, linkages, and resolutions for Children with IDD in psychiatric crisis – a danger to themselves or others.
4. **PARENT ADVOCACY**  
Increase parent understanding of child’s disability, their rights and responsibilities under IDEA/504, and effectively participate as a team member with professionals in planning special education services for their child.
5. **ECI 0-3**  
Early Childhood Intervention for children with developmental delays. Services include: Service Coordination, Speech, Occupational and Physical therapy, case management, specialized skills training (parent training), counseling, nutrition services. All of the services are provided in the child’s natural environment.
6. **EDUCATION/ TRAINING ALL STAKEHOLDERS**  
Helping stakeholders to understand individuals development and challenges by attending a variety of venues of education programs through an established curriculum with experts in each area. To provide IDD specific education to improve the level of knowledge, skill and capacity of stakeholders.
7. **TRANSPORTATION TRAINING**  
A service that provides individualized transportation training and advocates for equal access and empathetic customer service for riders with IDD including paratransit and fixed route within city and rural
8. **ASSESSMENT & EVALUATION**  
School districts can perform academic evaluations at parents request to determine child’s level of functioning and the need for special education services. This evaluation is at no cost to the parents.
9. **DIAGNOSTIC & TREATMENT**  
Diagnosis and Treatment Center that provides a person-centered focused approach based on evidence based practices that strengthens efficiencies and service outcomes for individuals with intellectual and developmental disabilities and other behavioral needs in the community.
10. **PRESCHOOL PPCD 3-5**  
Classroom settings that are nurturing while providing support to students with special needs ages 3-5, which can happen in a variety of settings. Preschool Programs for Children with Disabilities (PPCD) includes classroom services, dual enrollment with private preschool programs, counseling, therapies, and more.
11. **CASE MANAGEMENT**  
A collaborative process of assessment, planning, facilitation, care coordination, evaluation, and advocacy for options and services to meet an individual’s and family’s comprehensive needs through communication and available resources to promote quality, effective outcomes.
12. **INCLUSIVE ELEMENTARY**  
Models of services in which special needs students spend most of their time with typically developing peers or general education needs students. These models are built on the research that shows a positive effect for all students in terms of academic progress as well as success in social interactions leading to further success in life.
13. **SOCIAL RECREATION**  
Provide opportunities for persons with intellectual disabilities to develop the skills that enable them to participate in the recreation and leisure programs of their choice. Services provide support and advocacy to individuals who wish to participate in general recreation activities.
14. **RESPIRE**  
Temporary in home or out of home care of a dependent elderly, ill, or persons with disabilities, providing relief for their usual caregivers.

11 - 22 YEARS OLD

|  |   |
|--|---|
| <p><b>15.</b> SOCIAL SKILL TRAINING</p>                          | <p>A social skill is any competence facilitating interaction and communication with others where social rules and relations are created, communicated, and changed in verbal and nonverbal ways. The process of learning these skills is called socialization.</p>  |
| <p><b>16.</b> SEXUAL HEALTH EDUCATION</p>                        | <p>Adapting sexual health education to the individual's level of understanding to include their physical bodies, their emotions, self-worth, self-image and how that all correlates with their interrelations with others.</p>  |
| <p><b>17.</b> TRANSITION SERVICES / CAREER EXPLORATION</p>       | <p>Working and planning with ISD staff on post secondary education training or employment</p>   |
| <p><b>18.</b> ENTREPRENEURSHIP</p>                               | <p>Entrepreneurship would be the capacity &amp; willingness to develop, organize &amp; manage a New Business.</p>   |
| <p><b>19.</b> SELF ADVOCACY</p>                                  | <p>A service that provides ongoing instruction to individuals with IDD on developing skills to express needs, wants, and desires in order to improve quality of life.</p>   |
| <p><b>20.</b> VOCATIONAL EDUCATION</p>                           | <p>Vocational Education would be training for a Specific vocation in an Industry</p>  |
| <p><b>21.</b> BEHAVIORAL SUPPORT</p>                             | <p>The process of systemically applying interventions to improve positive socially acceptable behaviors</p>   |
| <p><b>22.</b> POST SECONDARY</p>                                 | <p>Education and training are for students who want to continue to learn in another environment after high school.</p>  |
| <p><b>23.</b> COMMUNITY SERVICE HOURS / PAID WORK EXPERIENCE</p> | <p>Time volunteered by an individual or an organization to benefit the people of a community or its institutions that may be linked to a requirement of an education training program or the findings of a court of law. / A career preparation activity at a work location giving participants the opportunity to perform real work for a customary wage while the participants are held to the same expectations as other work location employees as evidenced by the use of evaluations conducted by the workplace supervisor.</p> |

11 - 22 YEARS OLD  
(CONT)

|  |  |
|--|--|
| 24. SPIRITUAL CARE                       | Dynamic principles developed throughout the lifespan that guide a person's view of the world; influence his or her interpretation of a higher power, hope, morals, loss, faith, love, and trust; and provide structure and meaning to everyday activities  |
| 25. INTIMATE RELATIONSHIPS/ DATING       | Education on developing and maintaining healthy respectful intimate relationships  |
| 26. DAYHAB SERVICES                      | Assistance with acquiring, retaining, or improving self help, socialization, and adaptive skills necessary to live successfully in the community and to participate in home and community life.  |
| 27. GUARDIANSHIP OPTIONS                 | Texas Guardianship options: supported decision making , rep payee, power of attorney, trust and saving accounts, person centered planning  |
| 28. INDEPENDENT LIVING                   | A service or set of services that teaches independent living skills and empowers people with IDD to maintain control over their own life.  |
| 29. ADOLESCENT CRISIS SERVICES           | Crisis assessments, screening, linkages, and resolutions for Adolescents with IDD in psychiatric crisis – a danger to themselves or others.  |
| 30. TRANSITIONAL LIVING                  | A service or set of services that teaches individuals with disabilities necessary skills to seek accessible and affordable housing, manage their household, and access community-based resources   |
| 31. EDUCATION/ TRAINING ALL STAKEHOLDERS | Helping stakeholders to understand individuals development and challenges by attending a variety of venues of education programs through an established curriculum with experts in each area. To provide IDD specific education to improve the level of knowledge, skill and capacity of stakeholders. |

22 - AND UP

|   |   |
|---|---|
| <p><b>32. BEHAVIORAL SUPPORT</b></p>                                    | <p>Using a positive behavior management system to address an individual's complex behavioral health challenges within IDD population</p>  |
| <p><b>33. INTIMATE RELATIONSHIPS/ DATING</b></p>                        | <p>Education on developing and maintaining healthy respectful intimate relationships</p>  |
| <p><b>34. LONG-TERM BENEFITS TRAINING/ LTSS ADDITIONAL BENEFITS</b></p> | <p>A system with a variety of community resources to educate people with disabilities about long term services and supports that address acute and/or chronic health conditions and training on independent living skills.</p>  |
| <p><b>35. DAYHAB SERVICES</b></p>                                       | <p>Assistance with acquiring, retaining, or improving self help, socialization, and adaptive skills necessary to live successfully in the community and to participate in home and community life.</p>  |
| <p><b>36. EDUCATION/ TRAINING ALL STAKEHOLDERS</b></p>                  | <p>Helping stakeholders to understand individuals development and challenges by attending a variety of venues of education programs through an established curriculum with experts in each area. To provide IDD specific education to improve the level of knowledge, skill and capacity of stakeholders.</p> |
| <p><b>37. GROUP HOME</b></p>  | <p>Group home is congregate living comprised of 2-6 individuals in a residential home and is one category in a broader continuum of Long-Term Services and Supports (LTSS).</p>   |
| <p><b>38. HOUSING</b></p>   | <p>A house, apartment, group home, intermediate care facility or other place of residence that provides shelter and, if applicable, assistance with activities of daily living.</p>   |
| <p><b>39. GUARDIANSHIP OPTIONS</b></p>                                  | <p>Texas Guardianship options: supported decision making , rep payee, power of attorney, trust and saving accounts, person centered planning</p>  |
| <p><b>40. TRANSPORTATION SERVICES</b></p>                               | <p>A public or private service that moves individuals from one location to another. Transportation services are provided throughout the city and county, and can be accessed at designated locations (bus stops) or curb to curb (Sun Metro Lift, Amistad, taxi, or Uber).</p>                                |

22 - AND UP  
(CONT)

|   |  |
|---|--|
| 41. <b>IN HOME SUPPORT</b>                | In-home support consists of an array of services delivered in the family home with the goal of serving the individual at home and in the community   |
| 42. <b>DAYHAB ALTERNATIVE</b>             | Community Habilitation as an alternative that provides training in a variety of skills to become more independent and integrated in the community for individuals with IDD residing in their homes |
| 43. <b>EMPLOYMENT/ CAREER EXPLORATION</b> | assistance with labor market information and services to obtain and maintain employment of choice  |
| 44. <b>SUPPORTED EMPLOYMENT</b>           | Competitive employment in a community integrated setting that requires ongoing support services for long term job retention  |
| 45. <b>HEALTH CARE</b>                    | increased need of IDD informed healthcare  |
| 46. <b>SYSTEM ADVOCACY</b>                | Aim to make positive changes to attitudes, policies, and systems to promote the rights and interests of IDD population.  |
| 47. <b>FINANCIAL PLANNING SERVICES</b>    | Planning for the future and creating mechanisms such as a trust fund that will allow individuals with IDD to have additional resources while maintaining eligibility for government benefits.      |
| 48. <b>ADULT CRISIS SERVICES</b>          | Crisis assessments and linkages to individuals in psychiatric crisis – a danger to themselves or others.   |
| 49. <b>END OF LIFE PREPARATION</b>        | advanced care planning regarding future health and medical care such as advanced directives, living wills and power of attorney  |

FOR MORE INFORMATION SCAN THE QR CODE:



**GREEN - MULTIPLE RESOURCES AVAILABLE**

**YELLOW - LIMITED RESOURCES AVAILABLE**

**RED - NOT ESTABLISHED**